

<b>Collection</b>	HCHS Manuscript Collection	<b>Status</b>	Processed
<b>Object Id</b>	3.001.136	<b>Accessn/Loan</b>	2013-215-001
<b>Object Name</b>	Manuscript	<b>Source</b>	Found in Collection
<b>Other Name</b>		<b>Catalog Date</b>	04/24/2013
<b>Other No</b>		<b>Cataloged by</b>	Preston, Scott
<b>Old No</b>	Collection No. 136	<b>Date</b>	
<b>Title</b>	Hunterdon County Agricultural Extension Records, 1933-1968	<b>Year Range</b>	1933-1968

**Location** Doric House: Vault 1

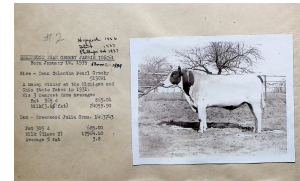
**Description** Abstract: This collection contains records of the Hunterdon County Agricultural Extension service and some of its employees from 1933 to 1960. Important subjects include the history of the artificial breeding of Dairy Cattle, the careers of agricultural agents Enos Perry, William Schaefer, and Edward Gauntt, and statistical accounts of cattle research in Hunterdon County. Researchers interested in the beginnings of the artificial cattle breeding program within the U.S. would also find this collection very helpful.

Scope and Content: This collection provides a deep look into the history of the artificial breeding program and its introduction to Hunterdon County. The totality of the collection provides the framework of how the artificial breeding program came to be. The artificial breeding program of Hunterdon County essentially pioneered the way for the artificial breeding on a national stage.

Enos J. Perry, a Rutgers agricultural officer, visited an island off the coast of Denmark. Upon this visit he learned the complexities and techniques of artificial breeding. Soon thereafter, Perry introduced this new more effective method of breeding to Hunterdon County. This gave rise to breeding organizations such as the North Jersey Breeding Association, among others. The Perry experience is very well documented through the William Schaefer papers and provides an in-depth view of his travel abroad in the 1937. This was the start for artificial breeding, not only in Hunterdon County, but eventually for the U.S.

Folder number one provides a Bull Pedigree chart with photos of prized bulls. This item gives a glimpse of the methodology used by the breeders to build upon success or restrict failures based on the breeding result. This folder will provide an overall view of the extent of the program throughout its early years.

Folder number two contains items from various organizations that evolved around the artificial breeding program. For example, convention issues, officer manuals, business farming of 1960, 20th annual dinner invitations, by-



laws and certificates of incorporation. This information is important to understanding the network of support surrounding the artificial breeding program here in Hunterdon County.

Folder number three contains much of the aforementioned information in the introduction concerning the travels of E.J. Perry. Also included is the papers of William Schaefer, a Hunterdon County agricultural agent, who provides great insight into early years of the artificial breeding program through the correspondence with affiliates.

Folders four through twelve provide monthly and annual reports. These reports were compiled by the 4-H organization and the Cooperative Extension Office. Highly detailed information regarding the statistical information of the breeders and farming in general is contained within these reports. For example, the status of calves are given yearly ratings. The totality of this information allows a farmer to research status of not only the organization but the successes and downfalls of the breeding of that respective year.

Item number thirteen is a large scrapbook created by Edward Gauntt's family in 1940. The scrapbook contains mostly newspaper clippings from Gauntt's days as an agricultural agent and his many accomplishments.

Item number fourteen is a Notebook from Flemington Courthouse dated from 1933-1935. The majority of entries are from Gauntt.

Item number fifteen is the Hunterdon County Democrat from the year 1937.

Any researcher interested in the beginnings of the artificial breeding program within the U.S. would find this collection very helpful.

## Identity Statement & Context

---

**Name of Creator**

**Reference Code**

NJFLHI5380

**Other Creators**

**Creator Added Entry**

**Dates of Creation**

**Administrative  
Biographical History**

In 1939, the first artificial breeding program of the nation was established in Hunterdon County by Enos. J Perry. The first cooperative breeding association included farmers from Hunterdon, Somerset and Warren counties. The organization was sponsored by the Hunterdon County Board of Agriculture. The spread of artificial breeding from Hunterdon County was very successful in many

regards. Today, a very high percentage of cattle are bred artificially, thanks to the pioneering work and research of E.J. Perry, Agricultural Agents, and the Cooperative Breeding Association of Hunterdon County.

**Dates of Accumulation**

**Extent and Medium of  
The Unit of Description**

3 boxes; 2 linear feet

**Site**

**Additional Sites**

**Archival History**

**Event**

**Container List**

Location	Container	Folder	Title	Description	Date
Vault 1	1	01	Sire information	Bull pedigree and photos, owned by the Hunterdon Cooperative Extension.	1937
Vault 1	1	02	Breeders Association Information	Constitution and by-laws of New Jersey Cooperative Breeders Association, certificate of incorporation, NJCBA news, Business farming, invitation for 20th Anniversary Dinner, and frozen bull semen manual.	1958-1960
Vault 1	1	03	Schaefer Papers	William Schaefer letters, early history of the artificial breeding program, and the E.J. Perry experience in Europe.	1978
Vault 1	1	04	Cooperative Extension annual/monthly reports	Monthly/ annual Cooperative Extension reports	1958-1965
Vault 1	1	05	CO-OP annual reports	CO- OP annual reports, status of the organization, status of calfs, etc.	1953-1968
Vault 1	1	06	CO-OP annual reports	CO-OP annual reports, status of organization, dairy and calf reports, etc.	1931-1935
Vault 1	1	07	CO-OP annual reports	CO-OP annual reports, status of organization, calf reports, dairy reports.	1936-1951
Vault 1	2	08	4-H annual reports		1938-1941
Vault 1	2	09	4-H annual reports		1942-1946
Vault 1	2	10	4-H annual reports		1947-1951
Vault 1	2	11	4-H annual reports		1952-1956
Vault 1	2	12	4-H annual reports		1957-1960

Location	Container	Folder	Title	Description	Date
vault 1	3	13	Edwin A. Gauntt Scrapbook items		1940
Vault 1	3	14	Flemington Courthouse notebook	Notebook from Flemington Courthouse primarily with entries from Ed Gauntt.	1933- 1935
Vault 1	3	15	Hunterdon County Democrat		1937

<b>Entered by</b>	Preston, Scott	<b>Status by</b>	Cornelius, Donald	<b>Last modified by</b>	Pamela Robinson
<b>Entered</b>	04/24/2013 12:00 PM	<b>Status date</b>	04/24/2013 12:00 PM	<b>Last modified</b>	02/28/2026 8:37 PM