

2017-2018 Photographic Catalogue of The Deats/Thatcher Archeological Collection

by Gregory C. Herman for the **Hunterdon County Historical Society (HCHS), Flemington, NJ**

as facilitated by Patricia Millen, HCHS Executive Director, and with help from Robert Sands and J. Mark Zdepski

CABINET 6



**Flemington Public Library 2nd Floor
West-wing collection
ESE view**



**River Road Archive Building 2nd Floor
WSW view**

NOTE: The following photographs were taken using a hand-held iPhone 7 using natural light sometimes augmented with a single 150W flood lamp. The photos capture the Deats/Thatcher collection in the manner in which they were found, except for some small adjustments to separate bunched pieces on cabinet shelves or in drawers. We assume that the arranged display of these artifacts mostly reflect the intent of the named originators, but recognize that they have been previously handled and perhaps augmented by former HCHS agents for public display at other locations. Many artifacts depicted below in the Library collection have been recently relocated to the River Road facility as a result of professional cataloguing and archiving.

2017-2018 Photographic Catalogue of The Deats/Thatcher Archeological Collection

by Gregory C. Herman for the **Hunterdon County Historical Society (HCHS)**, Flemington, NJ
as facilitated by Patricia Millen, HCHS Executive Director, and with help from Robert Sands and J. Mark Zdepski

River Road Archives Building



CABINET 6



2017-2018 Photographic Catalogue of The Deats/Thatcher Archeological Collection

by Gregory C. Herman for the Hunterdon County
Historical Society (HCHS), Flemington, NJ
as facilitated by Patricia Millen, HCHS Executive Director,
and with help from Robert Sands and J. Mark Zdepski

River Road Archives Building 2nd floor

CABINETS 6 and 7

and loose items on pallets





2017-2018 Photographic Catalogue of The Deats/Thatcher Archeological Collection

by Gregory C. Herman for the Hunterdon County Historical Society (HCHS), Flemington, NJ as facilitated by Patricia Millen, HCHS Executive Director, and with help from Robert Sands and J. Mark Zdepski

River Road Archives Building 2nd floor

CABINET 6

SHELVES 1 (TOP) to 6 (BOTTOM)

27 Wooden Boxes and Drawers,
1 Plastic Bag, 1 Glass Jar



2017-2018 Photographic Catalogue of The Deats/Thatcher Archeological Collection by Gregory C. Herman for the **Hunterdon County Historical Society (HCHS), Flemington, NJ** as facilitated by Patricia Millen, HCHS Executive Director, and with help from Robert Sands and J. Mark Zdepski

River Road Archives Building

CABINET 6 SHELVES 1 to 4

- 7 GOLD MEDAL wood boxes (GMWB)**
- 11 Cigar Boxes (CB)**
- 3 Miscellaneous wooden boxes (WB)**
- 1 Glass Jar 1 (GJ)**
- 1 Plastic Bag**
- 2 Wooden Drawers**



2017-2018 Photographic Catalogue of The Deats/Thatcher Archeological Collection by Gregory C. Herman for the **Hunterdon County Historical Society (HCHS), Flemington, NJ** as facilitated by Patricia Millen, HCHS Executive Director, and with help from Robert Sands and J. Mark Zdepski

River Road Archives Building

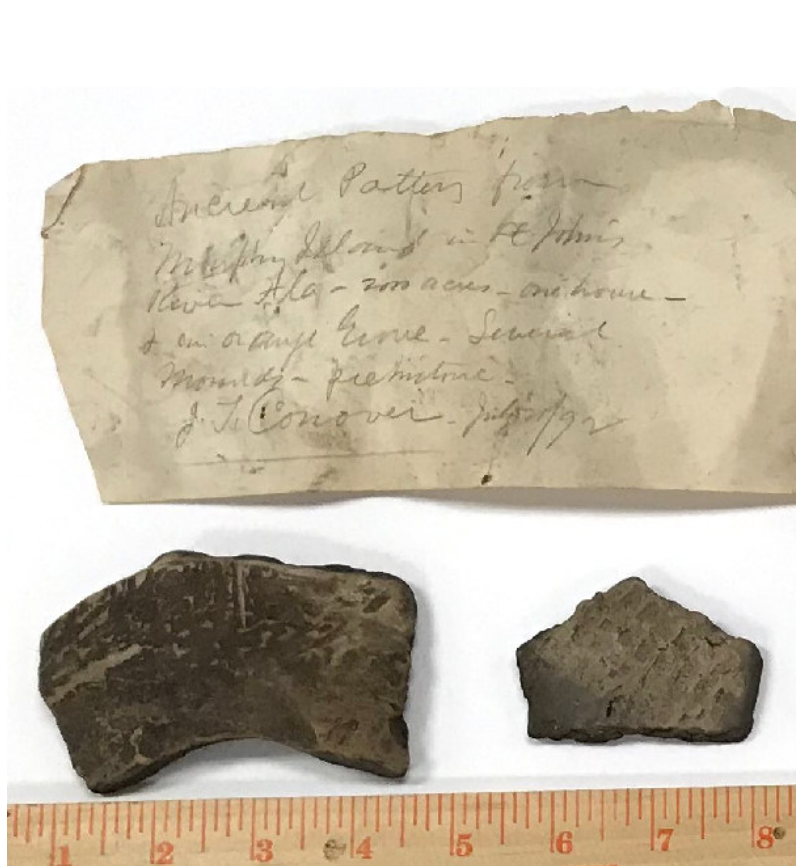
CABINET 6 SHELVES 3 to 6

- 7 GOLD MEDAL wood boxes (GMWB)
- 11 Cigar Boxes (CB)
- 3 Miscellaneous wooden boxes (WB)
- 1 Glass Jar 1 (GJ)
- 1 Plastic Bag
- 2 Wooden Drawers

2017-2018 Photographic Catalogue of The Deats/Thatcher Archeological Collection

by Gregory C. Herman for the Hunterdon County Historical Society (HCHS), Flemington, NJ

as facilitated by Patricia Millen, HCHS Executive Director, and with help from Robert Sands and J. Mark Zdepski



2017-2018 Photographic Catalogue of The Deats/Thatcher Archeological Collection

by Gregory C. Herman for the Hunterdon County Historical Society (HCHS), Flemington, NJ
as facilitated by Patricia Millen, HCHS Executive Director, and with help from Robert Sands and J. Mark Zdepski



2017-2018 Photographic Catalogue of The Deats/Thatcher Archeological Collection

by Gregory C. Herman for the Hunterdon County Historical Society (HCHS), Flemington, NJ
as facilitated by Patricia Millen, HCHS Executive Director, and with help from Robert Sands and J. Mark Zdepski



2017-2018 Photographic Catalogue of The Deats/Thatcher Archeological Collection

by Gregory C. Herman for the Hunterdon County Historical Society (HCHS), Flemington, NJ

as facilitated by Patricia Millen, HCHS Executive Director, and with help from Robert Sands and J. Mark Zdepksi



2017-2018 Photographic Catalogue of The Deats/Thatcher Archeological Collection

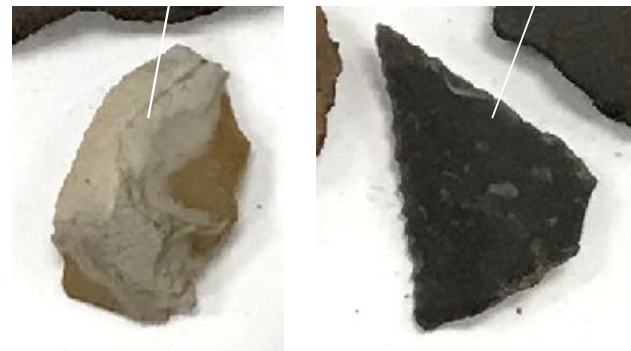
by Gregory C. Herman for the
**Hunterdon County Historical Society
(HCHS), Flemington, NJ**
as facilitated by Patricia Millen, HCHS
Executive Director, and with help
from Robert Sands and J. Mark
Zdepski



2017-2018 Photographic Catalogue of The Deats/Thatcher Archeological Collection

by Gregory C. Herman for the Hunterdon County Historical Society (HCHS), Flemington, NJ

as facilitated by Patricia Millen, HCHS Executive Director, and with help from Robert Sands and J. Mark Zdepski



2017-2018 Photographic Catalogue of The Deats/Thatcher Archeological Collection

by Gregory C. Herman for the Hunterdon County Historical Society (HCHS), Flemington, NJ

as facilitated by Patricia Millen, HCHS Executive Director, and with help from Robert Sands and J. Mark Zdepski



2017-2018 Photographic Catalogue of The Deats/Thatcher Archeological Collection

by Gregory C. Herman for the Hunterdon County Historical Society (HCHS), Flemington, NJ

as facilitated by Patricia Millen, HCHS Executive Director, and with help from Robert Sands and J. Mark Zdepksi



2017-2018 Photographic Catalogue of The Deats/Thatcher Archeological Collection

by Gregory C. Herman for the Hunterdon County Historical Society (HCHS), Flemington, NJ
as facilitated by Patricia Millen, HCHS Executive Director, and with help from Robert Sands and J. Mark Zdepksi



2017-2018 Photographic Catalogue of The Deats/Thatcher Archeological Collection

by Gregory C. Herman for the Hunterdon County Historical Society (HCHS), Flemington, NJ

as facilitated by Patricia Millen, HCHS Executive Director, and with help from Robert Sands and J. Mark Zdepksi



2017-2018 Photographic Catalogue of The Deats/Thatcher Archeological Collection

by Gregory C. Herman for the Hunterdon County Historical Society (HCHS), Flemington, NJ
as facilitated by Patricia Millen, HCHS Executive Director, and with help from Robert Sands and J. Mark Zdepski



2017-2018 Photographic Catalogue of The Deats/Thatcher Archeological Collection

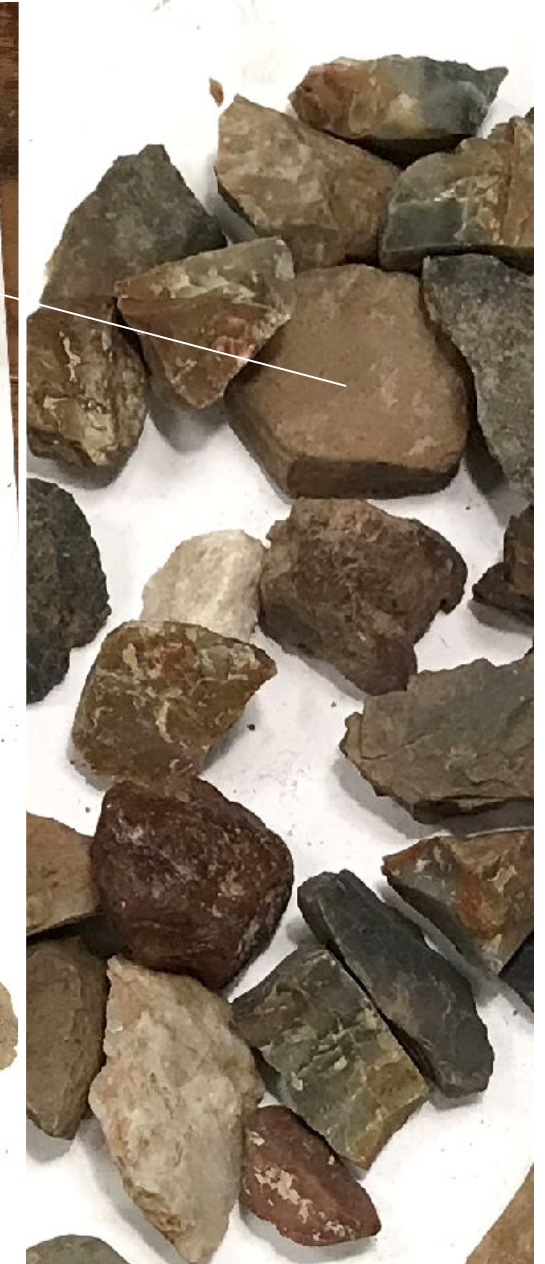
by Gregory C. Herman for the Hunterdon County Historical Society (HCHS), Flemington, NJ
as facilitated by Patricia Millen, HCHS Executive Director, and with help from Robert Sands and J. Mark Zdepski



2017-2018 Photographic Catalogue of The Deats/Thatcher Archeological Collection

by Gregory C. Herman for the Hunterdon County Historical Society (HCHS), Flemington, NJ

as facilitated by Patricia Millen, HCHS Executive Director, and with help from Robert Sands and J. Mark Zdepski



2017-2018 Photographic Catalogue of The Deats/Thatcher Archeological Collection

by Gregory C. Herman for the Hunterdon County Historical Society (HCHS), Flemington, NJ
as facilitated by Patricia Millen, HCHS Executive Director, and with help from Robert Sands and J. Mark Zdepksi



2017-2018 Photographic Catalogue of The Deats/Thatcher Archeological Collection

by Gregory C. Herman for the Hunterdon County Historical Society (HCHS), Flemington, NJ
as facilitated by Patricia Millen, HCHS Executive Director, and with help from Robert Sands and J. Mark Zdepski



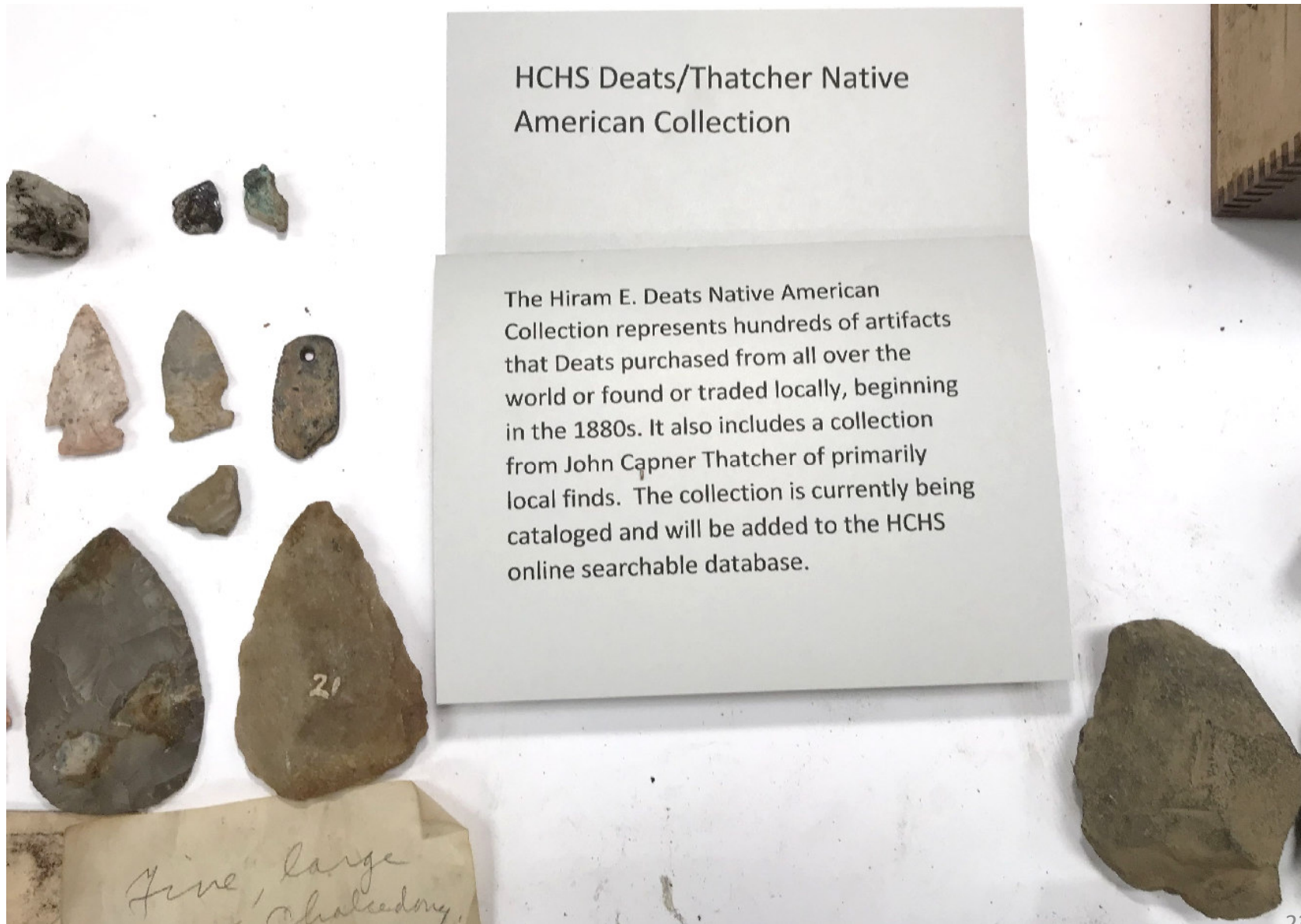
2017-2018 Photographic Catalogue of The Deats/Thatcher Archeological Collection

by Gregory C. Herman for the Hunterdon County Historical Society (HCHS), Flemington, NJ
as facilitated by Patricia Millen, HCHS Executive Director, and with help from Robert Sands and J. Mark Zdepski



2017-2018 Photographic Catalogue of The Deats/Thatcher Archeological Collection

by Gregory C. Herman for the **Hunterdon County Historical Society (HCHS), Flemington, NJ**
as facilitated by Patricia Millen, HCHS Executive Director, and with help from Robert Sands and J. Mark Zdepski



2017-2018 Photographic Catalogue of The Deats/Thatcher Archeological Collection

by Gregory C. Herman for the Hunterdon County Historical Society (HCHS), Flemington, NJ

as facilitated by Patricia Millen, HCHS Executive Director, and with help from Robert Sands and J. Mark Zdepski



2017-2018 Photographic Catalogue of The Deats/Thatcher Archeological Collection

by Gregory C. Herman for the Hunterdon County Historical Society (HCHS), Flemington, NJ

as facilitated by Patricia Millen, HCHS Executive Director, and with help from Robert Sands and J. Mark Zdepski



2017-2018 Photographic Catalogue of The Deats/Thatcher Archeological Collection

by Gregory C. Herman for the Hunterdon County Historical Society (HCHS), Flemington, NJ

as facilitated by Patricia Millen, HCHS Executive Director, and with help from Robert Sands and J. Mark Zdepski



2017-2018 Photographic Catalogue of The Deats/Thatcher Archeological Collection

by Gregory C. Herman for the Hunterdon County Historical Society (HCHS), Flemington, NJ
as facilitated by Patricia Millen, HCHS Executive Director, and with help from Robert Sands and J. Mark Zdepski



2017-2018 Photographic Catalogue of The Deats/Thatcher Archeological Collection

by Gregory C. Herman for the Hunterdon County Historical Society (HCHS), Flemington, NJ
as facilitated by Patricia Millen, HCHS Executive Director, and with help from Robert Sands and J. Mark Zdepski



2017-2018 Photographic Catalogue of The Deats/Thatcher Archeological Collection

by Gregory C. Herman for the Hunterdon County Historical Society (HCHS), Flemington, NJ
as facilitated by Patricia Millen, HCHS Executive Director, and with help from Robert Sands and J. Mark Zdepski



2017-2018 Photographic Catalogue of The Deats/Thatcher Archeological Collection

by Gregory C. Herman for the **Hunterdon County Historical Society (HCHS), Flemington, NJ**
as facilitated by Patricia Millen, HCHS Executive Director, and with help from Robert Sands and J. Mark Zdepski



2017-2018 Photographic Catalogue of The Deats/Thatcher Archeological Collection

by Gregory C. Herman for the Hunterdon County Historical Society (HCHS), Flemington, NJ

as facilitated by Patricia Millen, HCHS Executive Director, and with help from Robert Sands and J. Mark Zdepski



2017-2018 Photographic Catalogue of The Deats/Thatcher Archeological Collection

by Gregory C. Herman for the Hunterdon County Historical Society (HCHS), Flemington, NJ

as facilitated by Patricia Millen, HCHS Executive Director, and with help from Robert Sands and J. Mark Zdepksi



2017-2018 Photographic Catalogue of The Deats/Thatcher Archeological Collection

by Gregory C. Herman for the Hunterdon County Historical Society (HCHS), Flemington, NJ

as facilitated by Patricia Millen, HCHS Executive Director, and with help from Robert Sands and J. Mark Zdepski



2017-2018 Photographic Catalogue of The Deats/Thatcher Archeological Collection

by Gregory C. Herman for the Hunterdon County Historical Society (HCHS), Flemington, NJ
as facilitated by Patricia Millen, HCHS Executive Director, and with help from Robert Sands and J. Mark Zdepski



2017-2018 Photographic Catalogue of The Deats/Thatcher Archeological Collection

by Gregory C. Herman for the Hunterdon County Historical Society (HCHS), Flemington, NJ

as facilitated by Patricia Millen, HCHS Executive Director, and with help from Robert Sands and J. Mark Zdepski



2017-2018 Photographic Catalogue of The Deats/Thatcher Archeological Collection

by Gregory C. Herman for the Hunterdon County Historical Society (HCHS), Flemington, NJ

as facilitated by Patricia Millen, HCHS Executive Director, and with help from Robert Sands and J. Mark Zdepski



2017-2018 Photographic Catalogue of The Deats/Thatcher Archeological Collection

by Gregory C. Herman for the **Hunterdon County Historical Society (HCHS)**, Flemington, NJ
as facilitated by Patricia Millen, HCHS Executive Director, and with help from Robert Sands and J. Mark Zdepski



2017-2018 Photographic Catalogue of The Deats/Thatcher Archeological Collection

by Gregory C. Herman for the Hunterdon County Historical Society (HCHS), Flemington, NJ
as facilitated by Patricia Millen, HCHS Executive Director, and with help from Robert Sands and J. Mark Zdepski



2017-2018 Photographic Catalogue of The Deats/Thatcher Archeological Collection

by Gregory C. Herman for the Hunterdon County Historical Society (HCHS), Flemington, NJ
as facilitated by Patricia Millen, HCHS Executive Director, and with help from Robert Sands and J. Mark Zdepski



2017-2018 Photographic Catalogue of The Deats/Thatcher Archeological Collection

by Gregory C. Herman for the Hunterdon County Historical Society (HCHS), Flemington, NJ
as facilitated by Patricia Millen, HCHS Executive Director, and with help from Robert Sands and J. Mark Zdepski



2017-2018 Photographic Catalogue of The Deats/Thatcher Archeological Collection

by Gregory C. Herman for the Hunterdon County Historical Society (HCHS), Flemington, NJ
as facilitated by Patricia Millen, HCHS Executive Director, and with help from Robert Sands and J. Mark Zdepski



2017-2018 Photographic Catalogue of The Deats/Thatcher Archeological Collection

by Gregory C. Herman for the Hunterdon County Historical Society (HCHS), Flemington, NJ

as facilitated by Patricia Millen, HCHS Executive Director, and with help from Robert Sands and J. Mark Zdepski



2017-2018 Photographic Catalogue of The Deats/Thatcher Archeological Collection

by Gregory C. Herman for the Hunterdon County Historical Society (HCHS), Flemington, NJ

as facilitated by Patricia Millen, HCHS Executive Director, and with help from Robert Sands and J. Mark Zdepski



2017-2018 Photographic Catalogue of The Deats/Thatcher Archeological Collection

by Gregory C. Herman for the Hunterdon County Historical Society (HCHS), Flemington, NJ

as facilitated by Patricia Millen, HCHS Executive Director, and with help from Robert Sands and J. Mark Zdepski

Mr. Fielding Pope Deats, Jr.
Flemington R.D. #5, N.J.
Box 300 (Call me ed. 18/84)

Plate no - 36-3676
Has a box of Indian things. Will
leave box here - We can ask if we
want them - They are moving to
Rosemont, Penna. M.L. Wilson

Mr. Fielding Pope Deats, Jr.
Flemington R.D. #5, N.J.
Box 300 (Call me ed. 18/84)

Plate no - 36-3676
Has a box of Indian things. Will
leave box here - We can ask if we
want them - They are moving to
Rosemont, Penna. M.L. Wilson

FROM Fielding Pope Deats, Jr.
R.D. #5 Box 300 Flemington
New Jersey

TO Mrs. Ray W. Deats
The Hunterdon County Historical Society
Flemington, N.J.

In Care of
Miss. Craig, 118
Main St., Flemington, N.J.

In Care of
Miss. Craig, 118
Main St., Flemington, N.J.





2017-2018 Photographic Catalogue of The Deats/Thatcher Archeological Collection

by Gregory C. Herman for the **Hunterdon County Historical Society (HCHS), Flemington, NJ** as facilitated by Patricia Millen, HCHS Executive Director, and with help from Robert Sands and J. Mark Zdepski



2017-2018 Photographic Catalogue of The Deats/Thatcher Archeological Collection

by Gregory C. Herman for the **Hunterdon County Historical Society (HCHS)**, Flemington, NJ
as facilitated by Patricia Millen, HCHS Executive Director, and with help from Robert Sands and J. Mark Zdepski



2017-2018 Photographic Catalogue of The Deats/Thatcher Archeological Collection

by Gregory C. Herman for the **Hunterdon County Historical Society (HCHS)**, Flemington, NJ
as facilitated by Patricia Millen, HCHS Executive Director, and with help from Robert Sands and J. Mark Zdepski



Large saprolite vessel





2017-2018 Photographic Catalogue of The Deats/Thatcher Archeological Collection

by Gregory C. Herman for the **Hunterdon County
Historical Society (HCHS), Flemington, NJ**
as facilitated by Patricia Millen, HCHS Executive
Director, and with help from Robert Sands and J.
Mark Zdepski

Large earthen
mortar

2017-2018 Photographic Catalogue of The Deats/Thatcher Archeological Collection

by Gregory C. Herman for the **Hunterdon County Historical Society (HCHS)**, Flemington, NJ

as facilitated by Patricia Millen, HCHS Executive Director, and with help from Robert Sands and J. Mark Zdepski

Large
trap-rock
boulder



Long argillite pestle



2017-2018 Photographic Catalogue of The Deats/Thatcher Archeological Collection

by Gregory C. Herman for the Hunterdon County Historical Society (HCHS), Flemington, NJ
as facilitated by Patricia Millen, HCHS Executive Director, and with help from Robert Sands and J. Mark Zdepksi



2017-2018 Photographic Catalogue of The Deats/Thatcher Archeological Collection

by Gregory C. Herman for the **Hunterdon County Historical Society (HCHS)**, Flemington, NJ
as facilitated by Patricia Millen, HCHS Executive Director, and with help from Robert Sands and J. Mark Zdepski



2017-2018 Photographic Catalogue of The Deats/Thatcher Archeological Collection

by Gregory C. Herman for the **Hunterdon County Historical Society (HCHS)**, Flemington, NJ
as facilitated by Patricia Millen, HCHS Executive Director, and with help from Robert Sands and J. Mark Zdepski





**2017-2018
Photographic Catalogue
of The Deats/Thatcher
Archeological Collection**

by Gregory C. Herman for the
**Hunterdon County Historical
Society (HCHS), Flemington, NJ**
as facilitated by Patricia Millen,
HCHS Executive Director, and
with help from Robert Sands
and J. Mark Zdepski

2017-2018 Photographic Catalogue of The Deats/Thatcher Archeological Collection

by Gregory C. Herman for the Hunterdon County Historical Society (HCHS), Flemington, NJ
as facilitated by Patricia Millen, HCHS Executive Director, and with help from Robert Sands and J. Mark Zdepski



2017-2018 Photographic Catalogue of The Deats/Thatcher Archeological Collection

by Gregory C. Herman for the Hunterdon County Historical Society (HCHS), Flemington, NJ
as facilitated by Patricia Millen, HCHS Executive Director, and with help from Robert Sands and J. Mark Zdepksi

