

2017-2018 Photographic Catalogue of The Deats/Thatcher Archeological Collection

by Gregory C. Herman for the **Hunterdon County Historical Society (HCHS), Flemington, NJ**

as facilitated by Patricia Millen, HCHS Executive Director, and with help from Robert Sands and J. Mark Zdepski

CABINET 2



**Flemington Public Library 2nd Floor
West-wing collection
ESE view**



**River Road Archive Building 2nd Floor
WSW view**

NOTE: The following photographs were taken using a hand-held iPhone 7 using natural light sometimes augmented with a single 150W flood lamp. The photos capture the Deats/Thatcher collection in the manner in which they were found, except for some small adjustments to separate bunched pieces on cabinet shelves or in drawers. We assume that the arranged display of these artifacts mostly reflect the intent of the named originators, but recognize that they have been previously handled and perhaps augmented by former HCHS agents for public display at other locations. Many items have slumped down inclined shelving probably from Main Street traffic vibration and were slightly repositioned for photographing. A number of artifacts depicted below in the Library collection have been relocated to the River Road facility as a result of professional cataloguing and archiving.

2017-2018 Photographic Catalogue of The Deats/Thatcher Archeological Collection

by Gregory C. Herman for the **Hunterdon County Historical Society (HCHS), Flemington, NJ**
as facilitated by Patricia Millen, HCHS Executive Director, and with help from Robert Sands and J. Mark Zdepski



Flemington Public Library 2nd Floor West-wing collection ESE view

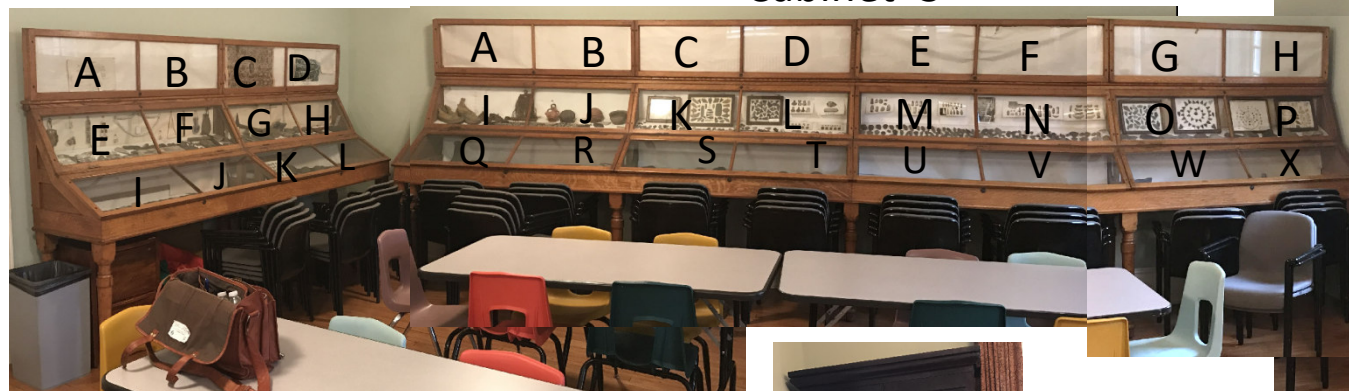
2017-2018 Photographic Catalogue of The Deats/Thatcher Archeological Collection

by Gregory C. Herman for the **Hunterdon County Historical Society (HCHS), Flemington, NJ**
as facilitated by Patricia Millen, HCHS Executive Director, and with help from Robert Sands and J. Mark Zdepski



Cabinet 2

Cabinet 3



Cabinet 4



Cabinet 1 (empty)



East
Wall



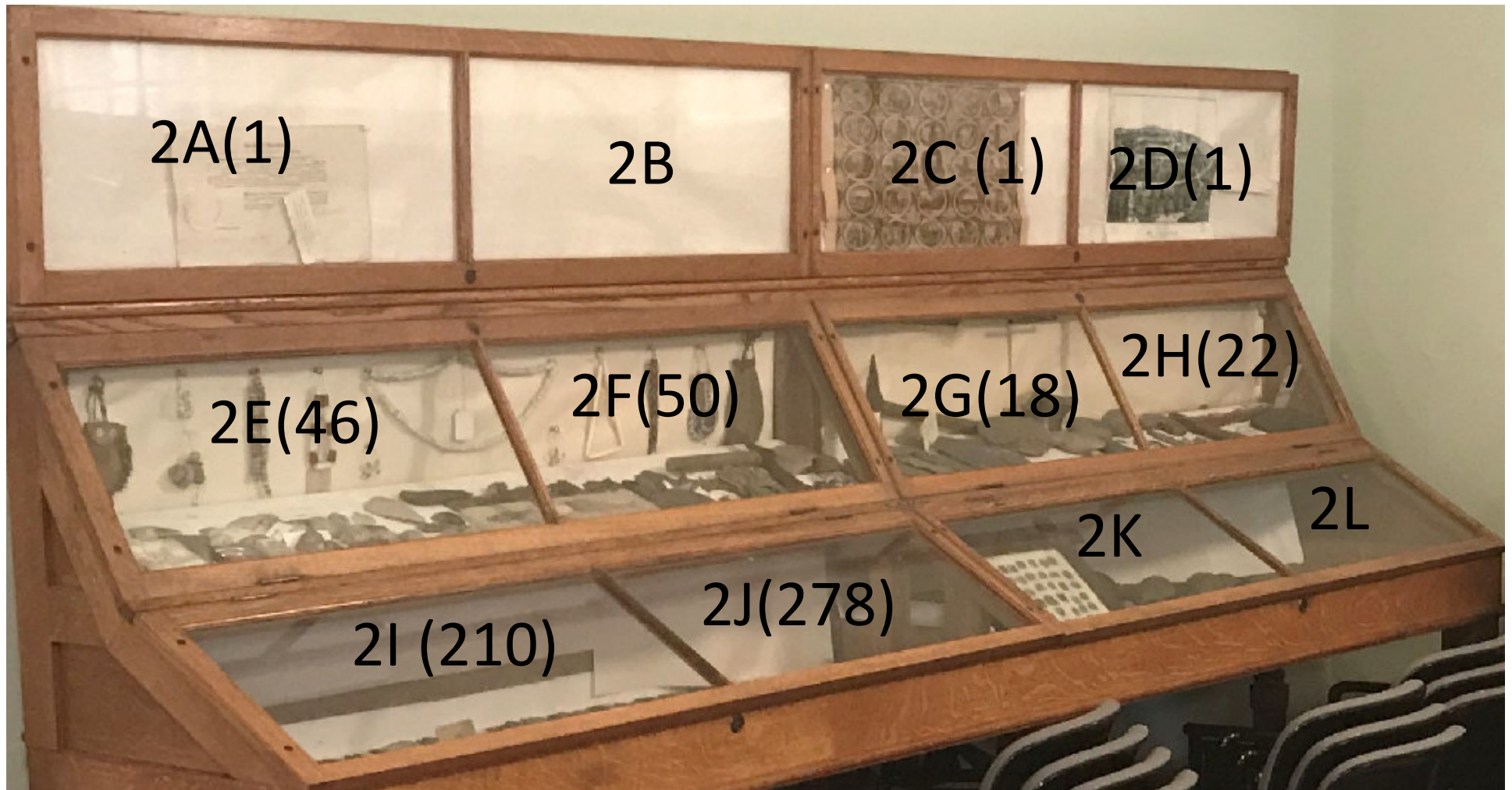
Cabinet On North Wall (empty)

Flemington Public Library 2nd Floor West-wing collection

2017-2018 Photographic Catalogue of The Deats/Thatcher Archeological Collection

by Gregory C. Herman for the Hunterdon County Historical Society (HCHS), Flemington, NJ

as facilitated by Patricia Millen, HCHS Executive Director, and with help from Robert Sands and J. Mark Zdepski

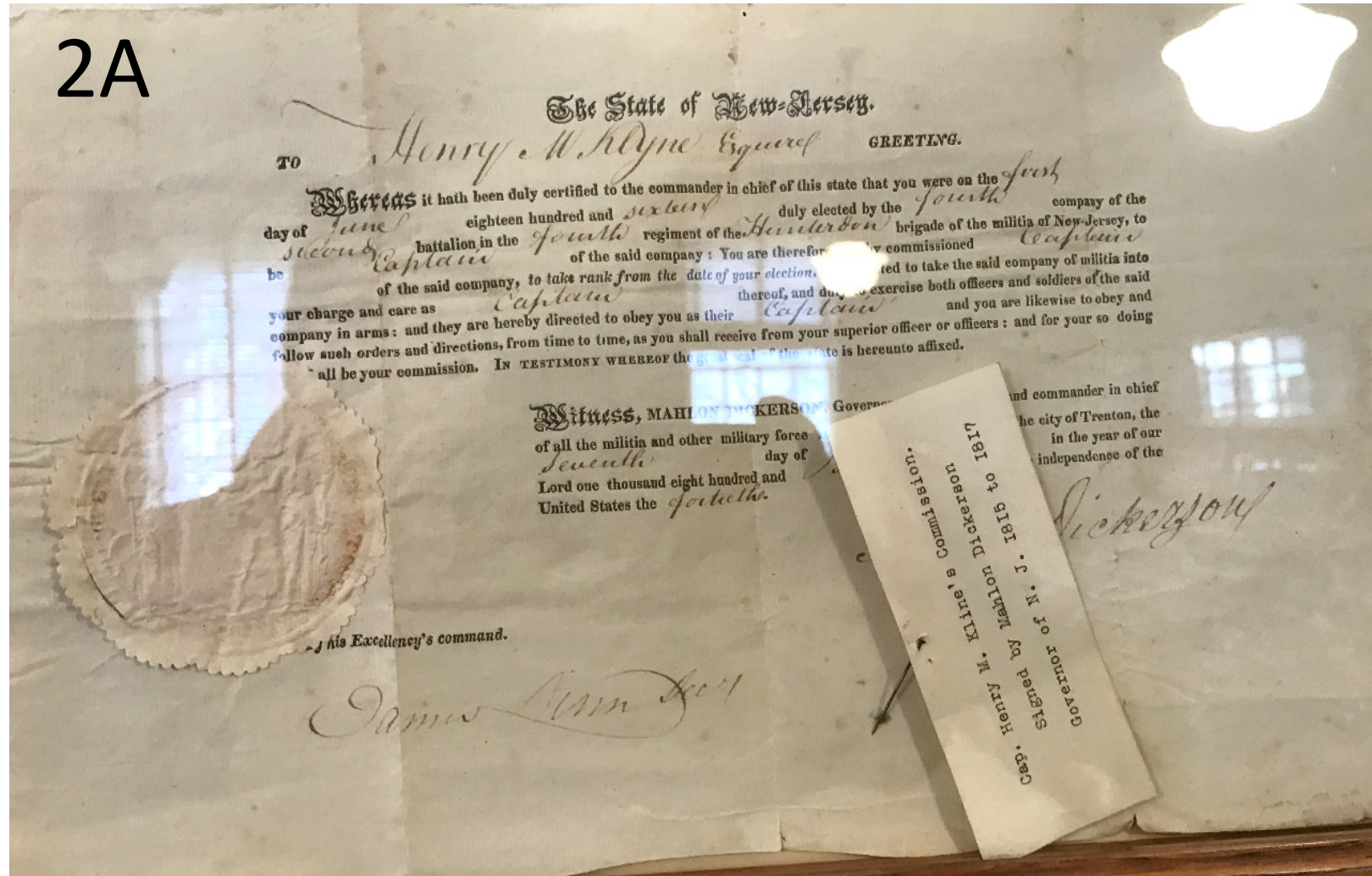


Cabinet 2

Flemington Public Library 2nd Floor
West-wing collection (number of pieces)

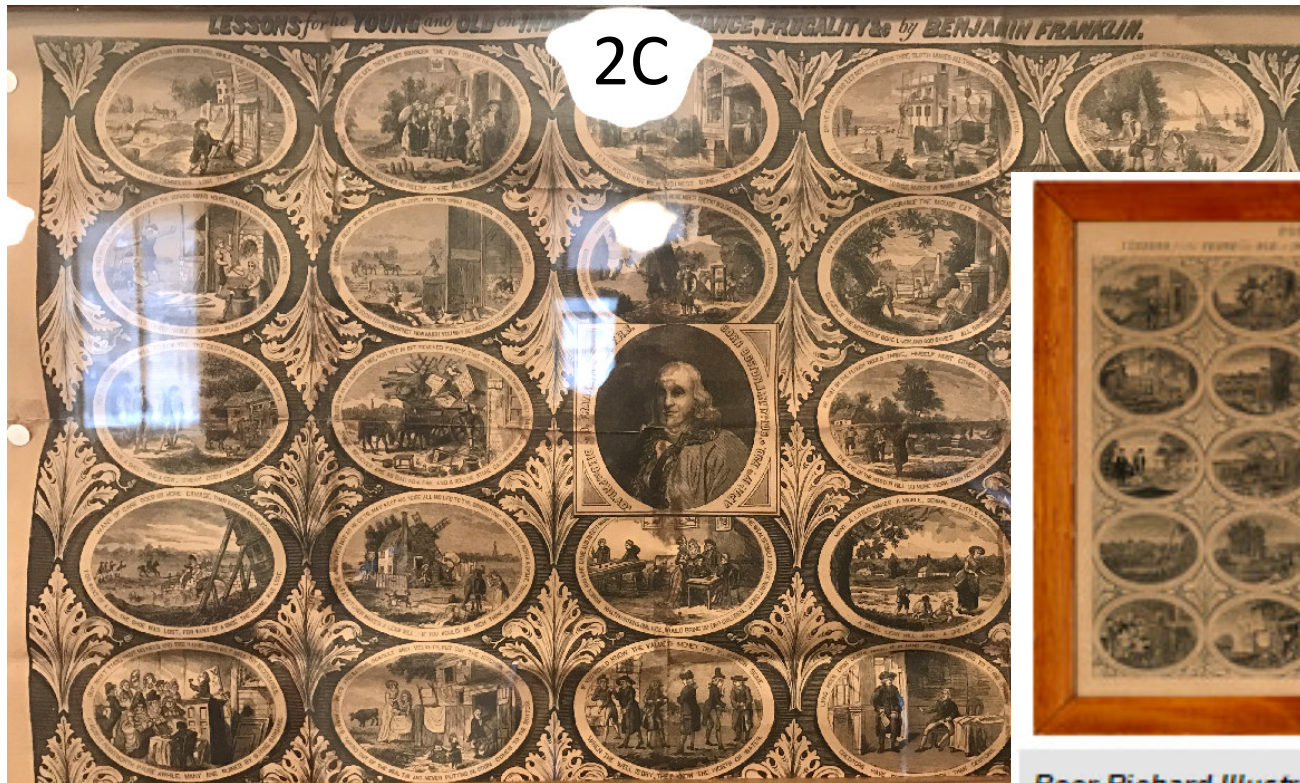
2017-2018 Photographic Catalogue of The Deats/Thatcher Archeological Collection

by Gregory C. Herman for the Hunterdon County Historical Society (HCHS), Flemington, NJ
as facilitated by Patricia Millen, HCHS Executive Director, and with help from Robert Sands and J. Mark Zdepksi



2017-2018 Photographic Catalogue of The Deats/Thatcher Archeological Collection

by Gregory C. Herman for the Hunterdon County Historical Society (HCHS), Flemington, NJ
as facilitated by Patricia Millen, HCHS Executive Director, and with help from Robert Sands and J. Mark Zdepski



Cabinet 2



Poor Richard Illustrated. Lessons for the young and old on industry, temperance, frugality &c. By Benjamin Franklin. Franklin's Maxims lithograph, published 1887 by Burnham; image credit on full record.

www.prices4antiques.com/Burnham-TOHP-Lithograph-1887-Poor-Richard-Illustrated-Lessons-Benjamin-Franklin-E8903454.html

2017-2018 Photographic Catalogue of The Deats/Thatcher Archeological Collection

by Gregory C. Herman for the Hunterdon County Historical Society (HCHS), Flemington, NJ

as facilitated by Patricia Millen, HCHS Executive Director, and with help from Robert Sands and J. Mark Zdepksi

2D



- 1. Main House
- 2. Outbuildings
- 3. Garden
- 4. River
- 5. Hill
- 6. Hill
- 7. Hill
- 8. Hill
- 9. Hill
- 10. Hill

BIRD'S EYE VIEW OF
MT VERNON.
THE HOME OF WASHINGTON.

- 1. Main House
- 2. Outbuildings
- 3. Garden
- 4. River
- 5. Hill
- 6. Hill
- 7. Hill
- 8. Hill
- 9. Hill
- 10. Hill

of Mount Vernon is a hundred dollars
for the purchase of a negro woman by the
name of Lacey about twenty three years
of age who the woman I would like to
be little against any other person and never
and all others what so ever and would not let
any one what ever as well as my own
and that this is to be done 1841
Jas. E. Deats

Wm. Thatcher

2017-2018 Photographic Catalogue of The Deats/Thatcher Archeological Collection

by Gregory C. Herman for the **Hunterdon County Historical Society (HCHS)**, Flemington, NJ

as facilitated by Patricia Millen, HCHS Executive Director, and with help from Robert Sands and J. Mark Zdepski

2D



2017-2018 Photographic Catalogue of The Deats/Thatcher Archeological Collection

by Gregory C. Herman for the Hunterdon County Historical Society (HCHS), Flemington, NJ
as facilitated by Patricia Millen, HCHS Executive Director, and with help from Robert Sands and J. Mark Zdepski



**2017-2018
Photographic
Catalogue of The
Deats/Thatcher
Archeological
Collection**

by Gregory C. Herman
for the **Hunterdon
County Historical
Society (HCHS),
Flemington, NJ**
as facilitated by Patricia
Millen, HCHS Executive
Director, and with help
from Robert Sands and
J. Mark Zdepski



2017-2018 Photographic Catalogue of The Deats/Thatcher Archeological Collection

by Gregory C. Herman for the Hunterdon County Historical Society (HCHS), Flemington, NJ

as facilitated by Patricia Millen, HCHS Executive Director, and with help from Robert Sands and J. Mark Zdepski



2017-2018 Photographic Catalogue of The Deats/Thatcher Archeological Collection

by Gregory C. Herman for the **Hunterdon County Historical Society (HCHS)**, Flemington, NJ

as facilitated by Patricia Millen, HCHS Executive Director, and with help from Robert Sands and J. Mark Zdepski



2017-2018 Photographic Catalogue of The Deats/Thatcher Archeological Collection

by Gregory C. Herman for the Hunterdon County Historical Society (HCHS), Flemington, NJ

as facilitated by Patricia Millen, HCHS Executive Director, and with help from Robert Sands and J. Mark Zdepski



2017-2018 Photographic Catalogue of The Deats/Thatcher Archeological Collection

by Gregory C. Herman for the Hunterdon County Historical Society (HCHS), Flemington, NJ

as facilitated by Patricia Millen, HCHS Executive Director, and with help from Robert Sands and J. Mark Zdepski



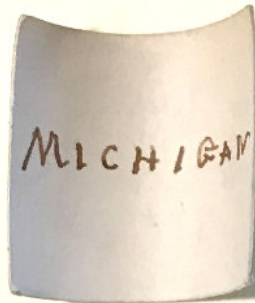
2017-2018 Photographic Catalogue of The Deats/Thatcher Archeological Collection

by Gregory C. Herman for the Hunterdon County Historical Society (HCHS), Flemington, NJ

as facilitated by Patricia Millen, HCHS Executive Director, and with help from Robert Sands and J. Mark Zdepski

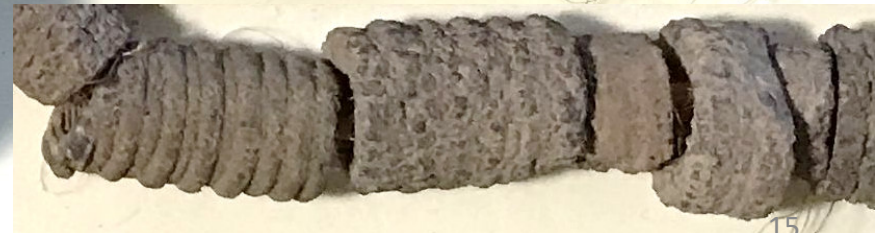


Cabinet 2E
Native copper
cup/thimble
From Michigan



2E

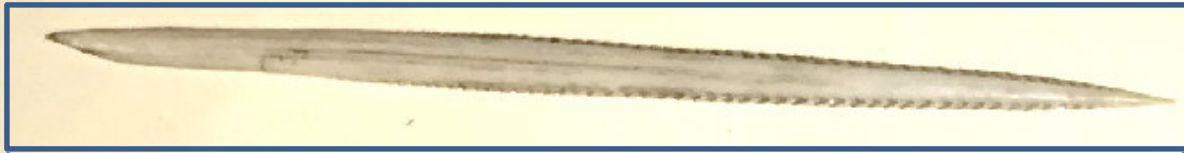
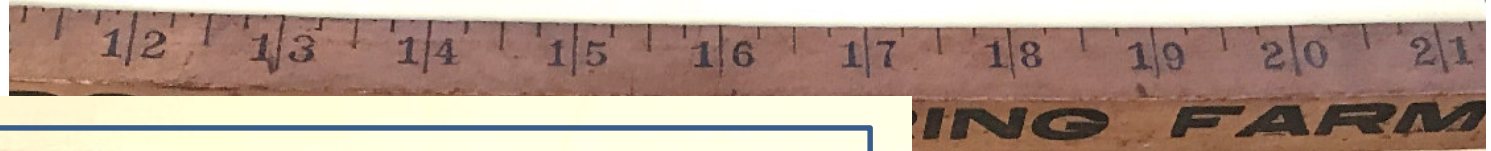
Cabinet 2E
Clay beads from
Buck County, Pa.



2017-2018 Photographic Catalogue of The Deats/Thatcher Archeological Collection

by Gregory C. Herman for the Hunterdon County Historical Society (HCHS), Flemington, NJ

as facilitated by Patricia Millen, HCHS Executive Director, and with help from Robert Sands and J. Mark Zdepski



2E



Cabinet 2, Section E
Bone awl from Kentucky,
fish-bone pick



2017-2018 Photographic Catalogue of The Deats/Thatcher Archeological Collection

by Gregory C. Herman for the Hunterdon County Historical Society (HCHS), Flemington, NJ

as facilitated by Patricia Millen, HCHS Executive Director, and with help from Robert Sands and J. Mark Zdepski

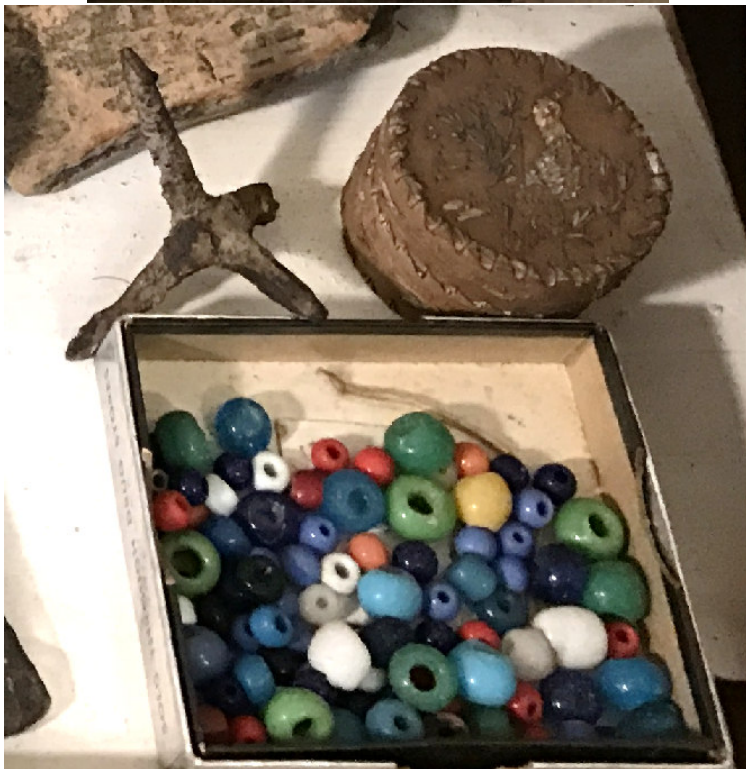
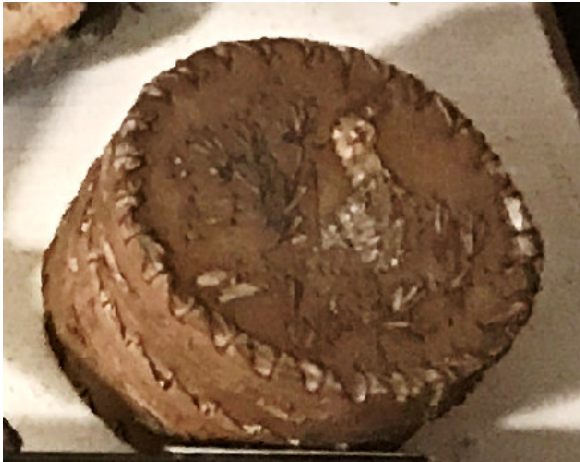


2E-F

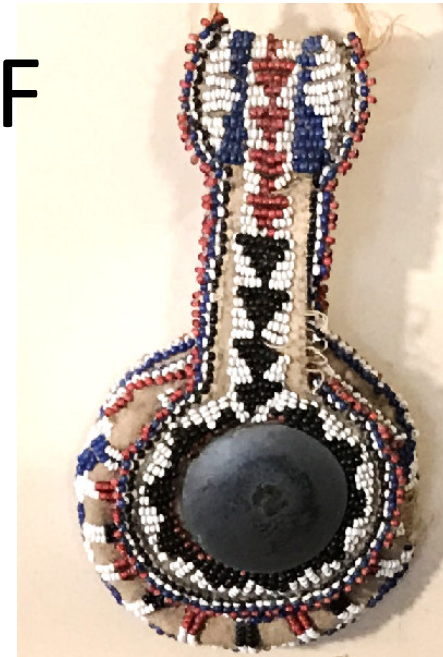


2017-2018 Photographic Catalogue of The Deats/Thatcher Archeological Collection

by Gregory C. Herman for the Hunterdon County Historical Society (HCHS), Flemington, NJ
as facilitated by Patricia Millen, HCHS Executive Director, and with help from Robert Sands and J. Mark Zdepksi



2F



2017-2018 Photographic Catalogue of The Deats/Thatcher Archeological Collection

by Gregory C. Herman for the Hunterdon County Historical Society (HCHS), Flemington, NJ
as facilitated by Patricia Millen, HCHS Executive Director, and with help from Robert Sands and J. Mark Zdepski



2F



N



**2017-2018
Photographic
Catalogue of The
Deats/Thatcher
Archeological
Collection**

by Gregory C. Herman
for the **Hunterdon
County Historical
Society (HCHS),
Flemington, NJ**
as facilitated by Patricia
Millen, HCHS Executive
Director, and with help
from Robert Sands and
J. Mark Zdepski



2017-2018 Photographic Catalogue of The Deats/Thatcher Archeological Collection

by Gregory C. Herman for the Hunterdon County Historical Society (HCHS), Flemington, NJ

as facilitated by Patricia Millen, HCHS Executive Director, and with help from Robert Sands and J. Mark Zdepski



**2017-2018
Photographic
Catalogue of
The
Deats/Thatcher
Archeological
Collection**

by Gregory C. Herman
for the **Hunterdon
County Historical
Society (HCHS),
Flemington, NJ**
as facilitated by
Patricia Millen, HCHS
Executive Director,
and with help from
Robert Sands and J.
Mark Zdepski

2I-J



2017-2018 Photographic Catalogue of The Deats/Thatcher Archeological Collection

by Gregory C. Herman
for the **Hunterdon
County Historical
Society (HCHS),
Flemington, NJ**
as facilitated by
Patricia Millen, HCHS
Executive Director,
and with help from
Robert Sands and J.
Mark Zdepski

2I-J



2017-2018 Photographic Catalogue of The Deats/Thatcher Archeological Collection

by Gregory C. Herman for the Hunterdon County Historical Society (HCHS), Flemington, NJ

as facilitated by Patricia Millen, HCHS Executive Director, and with help from Robert Sands and J. Mark Zdepski

"WAR
POINTS
Collected
along the
Delaware
River"



2017-2018 Photographic Catalogue of The Deats/Thatcher Archeological Collection

by Gregory C. Herman for the Hunterdon County Historical Society (HCHS), Flemington, NJ
as facilitated by Patricia Millen, HCHS Executive Director, and with help from Robert Sands and J. Mark Zdepski

2J "WAR POINTS Collected along the Delaware River"



2017-2018 Photographic Catalogue of The Deats/Thatcher Archeological Collection

by Gregory C. Herman for the Hunterdon County Historical Society (HCHS), Flemington, NJ
as facilitated by Patricia Millen, HCHS Executive Director, and with help from Robert Sands and J. Mark Zdepski

2G

2H

Est. 200 pieces

2K

2L

2017-2018 Photographic Catalogue of The Deats/Thatcher Archeological Collection

by Gregory C. Herman for the Hunterdon County Historical Society (HCHS), Flemington, NJ

as facilitated by Patricia Millen, HCHS Executive Director, and with help from Robert Sands and J. Mark Zdepski



2017-2018 Photographic Catalogue of The Deats/Thatcher Archeological Collection

by Gregory C. Herman for the Hunterdon County Historical Society (HCHS), Flemington, NJ

as facilitated by Patricia Millen, HCHS Executive Director, and with help from Robert Sands and J. Mark Zdepski

NOTES:

Edmonson County, KY is where Mammoth Cave and Indian Hill are located.

Warren O. probably Warren County, Ohio Indian Burial Mounds and Earthworks including 'Fort Ancient'

2G



2017-2018 Photographic Catalogue of The Deats/Thatcher Archeological Collection

by Gregory C. Herman for the **Hunterdon County Historical Society (HCHS)**, Flemington, NJ
as facilitated by Patricia Millen, HCHS Executive Director, and with help from Robert Sands and J. Mark Zdepski

HOME › NATIVE AMERICANS › 11,000-YEAR-OLD SEAFARING INDIAN SITES DISCOVERED ON CALIFORNIA ISLAND

11,000-Year-Old Seafaring Indian Sites Discovered on California Island

ANTHROPOLOGY ARCHAEOLOGY CALIFORNIA EARLY CALIFORNIANS ICE AGE INDIANS NATIVE AMERICANS

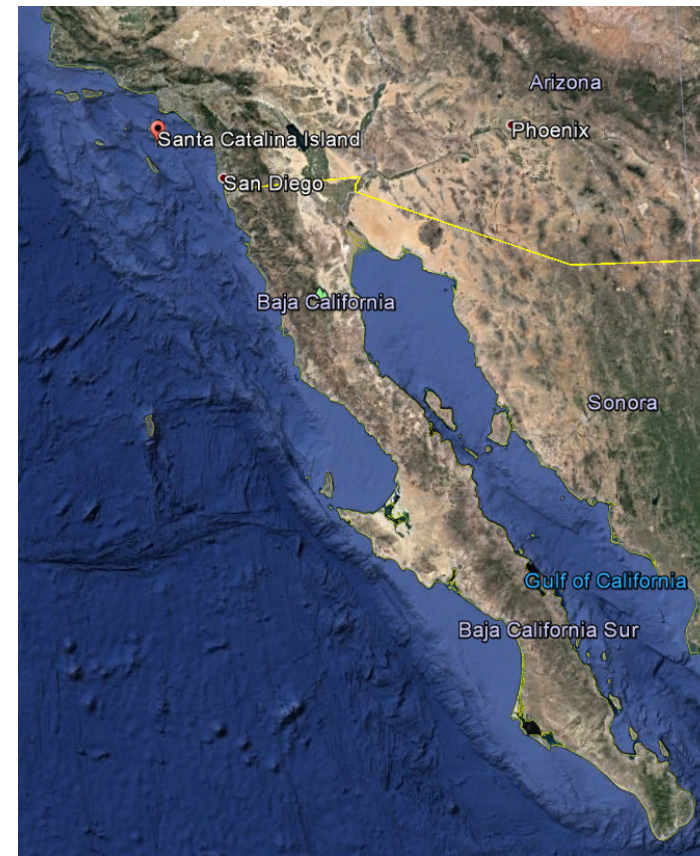
© JANUARY 6, 2014 • UPDATED JANUARY 1, 2016 —BY BLAKE DE PASTINO 1809 37

2G14



Catalina island is famous as the home of Arlington Man, perhaps the oldest human remains ever found in North America, discovered in 1959 and dated to 13,000 years ago.

<http://western digs.org/11000-year-old-seafaring-indian-sites-discovered-on-california-island/>



2017-2018 Photographic Catalogue of The Deats/Thatcher Archeological Collection

by Gregory C. Herman for the **Hunterdon County Historical Society (HCHS)**, Flemington, NJ

as facilitated by Patricia Millen, HCHS Executive Director, and with help from Robert Sands and J. Mark Zdepski

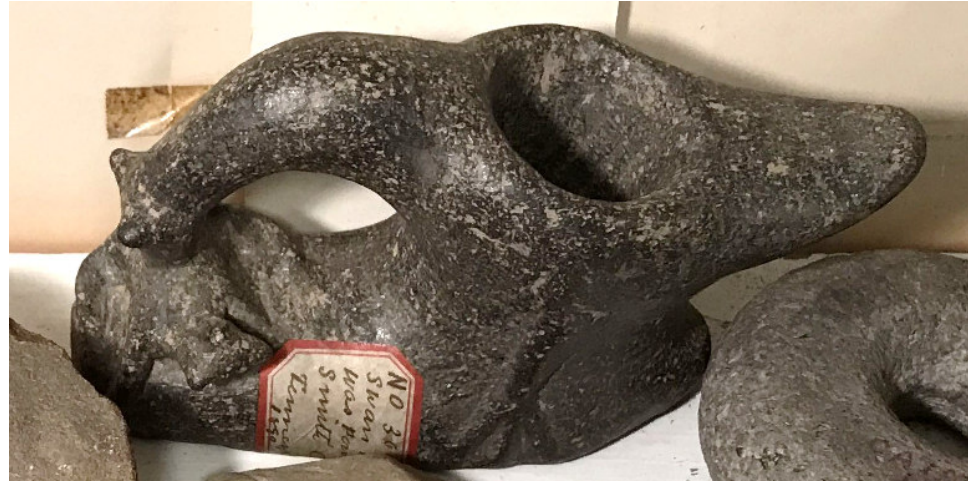


2017-2018 Photographic Catalogue of The Deats/Thatcher Archeological Collection

by Gregory C. Herman for the **Hunterdon County Historical Society (HCHS), Flemington, NJ**

as facilitated by Patricia Millen, HCHS Executive Director, and with help from Robert Sands and J. Mark Zdepksi

FORTIFIED TOWN AT THE MOUTH OF DIXON CREEK
Also known as Beasley Mounds, was a large village area with one large platform mound 8 feet (2.4 m) in height and 125 feet (38 m) in diameter and three smaller ones. Excavations at the site in 1895 produced stone pipes, stone discoidsals used for the Native American game of "chunkey" and numerous examples of Mississippian culture pottery. This location is listed the National Register of Historic Places.



2G13



G+1 0
★★★★★
0 Reviews
[Write review](#)

**Speaking with the Ancestors:
Mississippian Stone Statuary of the
Tennessee ...**

By Kevin E. Smith, James V. Miller



2017-2018 Photographic Catalogue of The Deats/Thatcher Archeological Collection

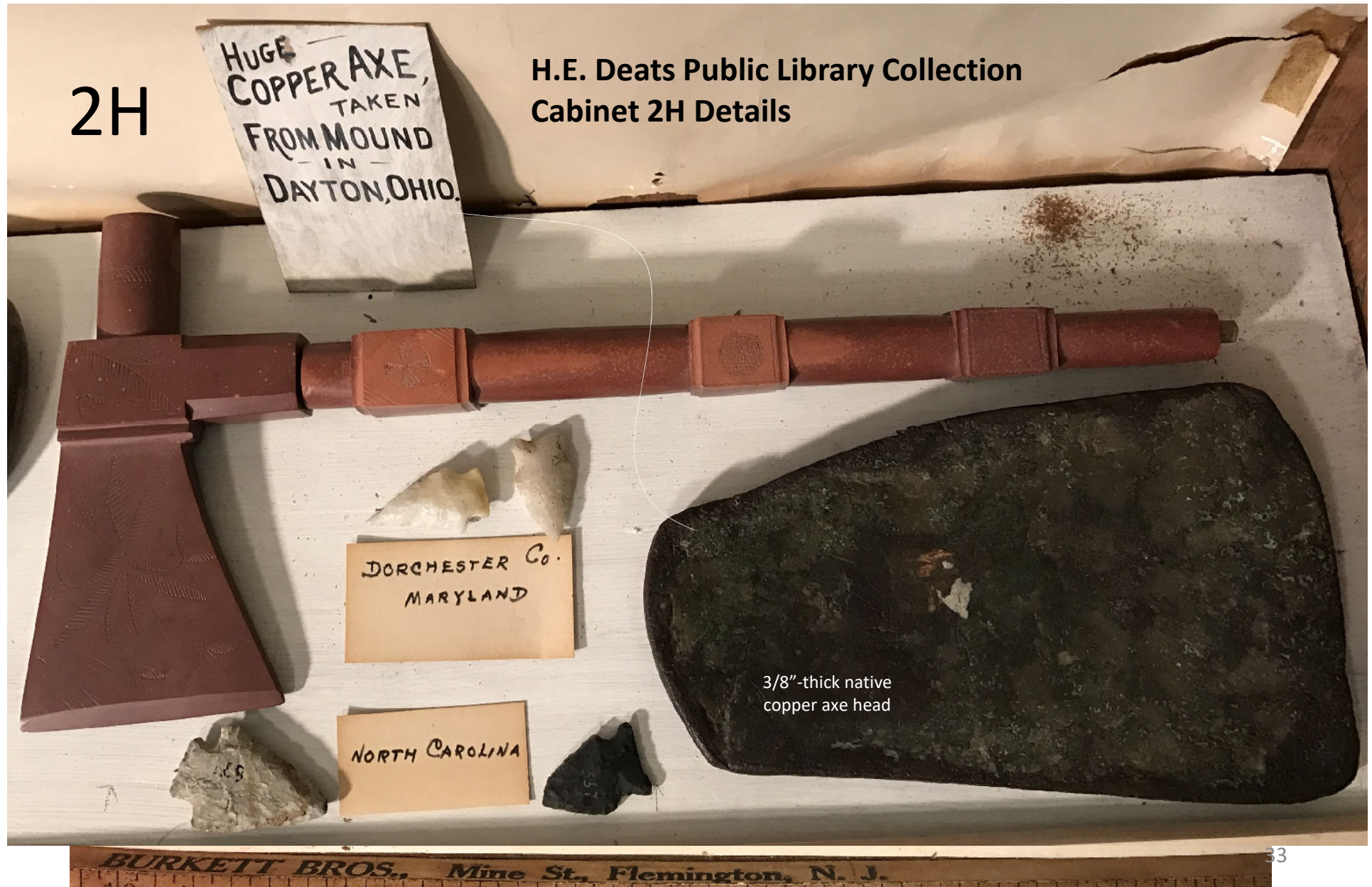
by Gregory C. Herman for the Hunterdon County Historical Society (HCHS), Flemington, NJ
as facilitated by Patricia Millen, HCHS Executive Director, and with help from Robert Sands and J. Mark Zdepksi



2017-2018 Photographic Catalogue of The Deats/Thatcher Archeological Collection

by Gregory C. Herman for the Hunterdon County Historical Society (HCHS), Flemington, NJ

as facilitated by Patricia Millen, HCHS Executive Director, and with help from Robert Sands and J. Mark Zdepski



2017-2018 Photographic Catalogue of The Deats/Thatcher Archeological Collection

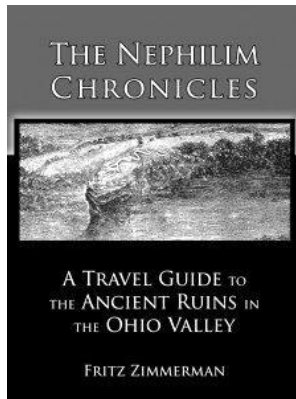
by Gregory C. Herman for the **Hunterdon County Historical Society (HCHS)**, Flemington, NJ
as facilitated by Patricia Millen, HCHS Executive Director, and with help from Robert Sands and J. Mark Zdepski



2017-2018 Photographic Catalogue of The Deats/Thatcher Archeological Collection

by Gregory C. Herman for the Hunterdon County Historical Society (HCHS), Flemington, NJ

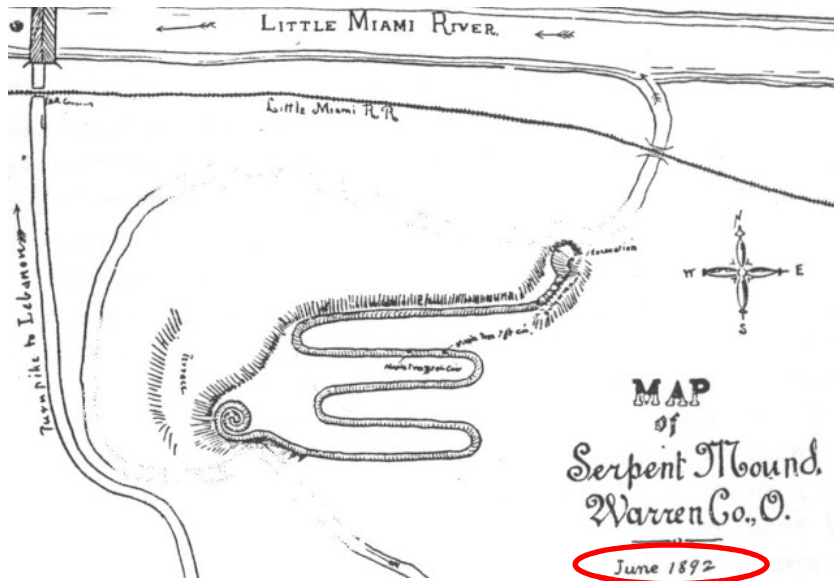
as facilitated by Patricia Millen, HCHS Executive Director, and with help from Robert Sands and J. Mark Zdepski



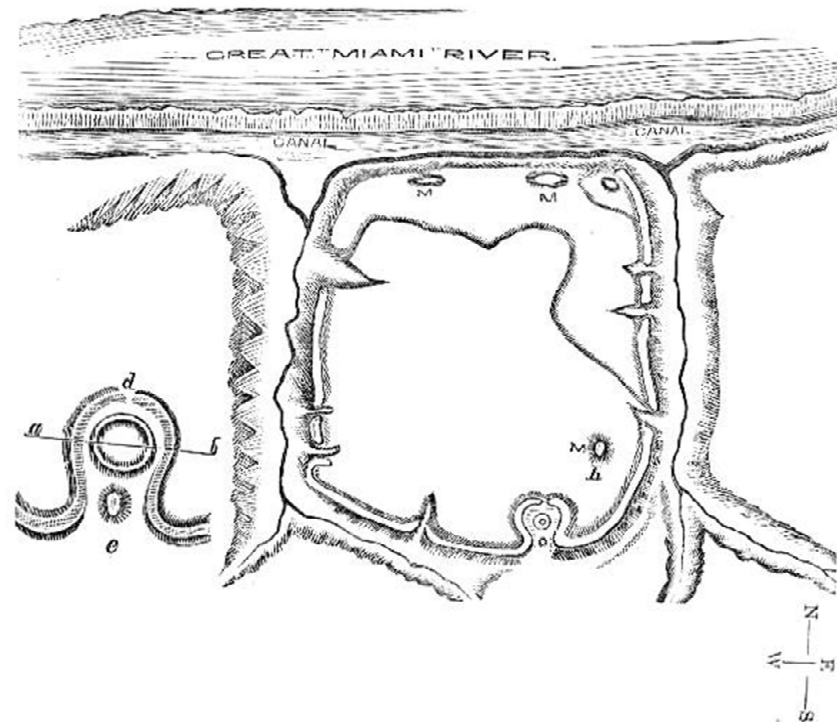
<https://moundbuilder.blogspot.com/p/30-serpent-mounds-in-north-america.html>

2H

One of Ohio's best sites to visit is this earthwork near Dayton that depicts two serpents facing an egg or sun disc. The site is overgrown but visible in the winter months.



A serpent mound once existed in Warren County but was destroyed by a gravel company. An identical mound can still be seen near Holton, Indiana.



2017-2018 Photographic Catalogue of The Deats/Thatcher Archeological Collection

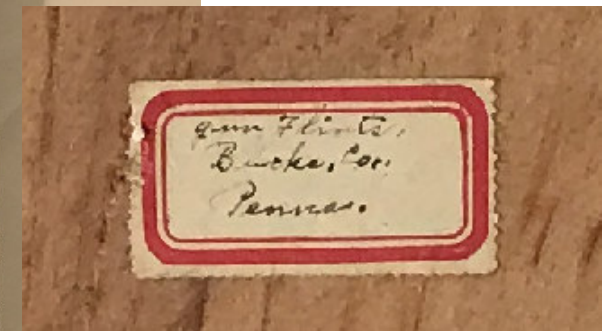
by Gregory C. Herman for the Hunterdon County Historical Society (HCHS), Flemington, NJ

as facilitated by Patricia Millen, HCHS Executive Director, and with help from Robert Sands and J. Mark Zdepski



2K1

Gun Flints
Bucks County.
Penna.



2017-2018 Photographic Catalogue of The Deats/Thatcher Archeological Collection

by Gregory C. Herman for the Hunterdon County Historical Society (HCHS), Flemington, NJ

as facilitated by Patricia Millen, HCHS Executive Director, and with help from Robert Sands and J. Mark Zdepski



2017-2018 Photographic Catalogue of The Deats/Thatcher Archeological Collection

by Gregory C. Herman for the Hunterdon County Historical Society (HCHS), Flemington, NJ

as facilitated by Patricia Millen, HCHS Executive Director, and with help from Robert Sands and J. Mark Zdepski



2017-2018 Photographic Catalogue of The Deats/Thatcher Archeological Collection

by Gregory C. Herman for the Hunterdon County Historical Society (HCHS), Flemington, NJ
as facilitated by Patricia Millen, HCHS Executive Director, and with help from Robert Sands and J. Mark Zdepski



2017-2018 Photographic Catalogue of The Deats/Thatcher Archeological Collection

by Gregory C. Herman for the Hunterdon County Historical Society (HCHS), Flemington, NJ

as facilitated by Patricia Millen, HCHS Executive Director, and with help from Robert Sands and J. Mark Zdepski



2017-2018 Photographic Catalogue of The Deats/Thatcher Archeological Collection

by Gregory C. Herman for the **Hunterdon County Historical Society (HCHS), Flemington, NJ**
as facilitated by Patricia Millen, HCHS Executive Director, and with help from Robert Sands and J. Mark Zdepski

