



The Flemington Raid

Topic of Annual Meeting April 15 2 p.m. at the Flemington Public Library

On December 14, 1776, a force of the Queen's 16th Light Dragoons, under the command of Cornet Francis Geary, attempted to seize colonial supplies at Flemington. Hunterdon County Militia under Captain John Schenck ambushed them. Learn more about Hunterdon County's most famous military action in the American Revolution presented by Mr. Charles Riddle.

Mr. Riddle is a retired educator and local historian. He taught Social Studies in Bethlehem Township for 35 years and is the author of *Colonial and Revolutionary Bethlehem Township*. Presently Mr. Riddle is doing extensive research on the Loyalists and Patriots in Hunterdon County during the Revolution.

The Society's Annual Meeting is open to members and the public and is being held Sunday, April 15, at the Flemington Public Library. Join us for Mr. Riddle's presentation followed by refreshments.

Geary's Grave Location

John W. Kuhl

A recent visitor to the Deats Library came seeking the location of the grave of Francis Geary, a young British officer who led a scouting reconnaissance to Flemington on December 14, 1776 to determine the activity of Washington's army. Geary reached Flemington, found the supply cache he sought, and was returning to Pennington for a larger force to capture the provisions. Just north of Larison's Corner his troop was attacked by local Amwell militia. Geary was hit and killed and his troops fled back to Pennington. The incident served to protect the provisions and further, to mask the activities of Washington's Army as it prepared to cross the Delaware to Trenton.

The story was eloquently told in detail by member Kathleen Schreiner in the Winter 1977 issue of the Society's Newsletter. The Society took an active interest in the incident when they opened the grave in May of 1891. Bones and buttons found confirmed the burial. Some of the buttons were returned to the family in England which responded with funds to erect a stone marker. Our Society was to arrange for its placement and site maintenance. A native stone from the Rocktown area was engraved and placed to mark the grave. The stone survived a bout with a bulldozer during the building of a surrounding housing development a few years ago. Under the directly



Monument to Cornet Francis Geary in Raritan Township
photographed by John W. Kuhl in February 2007

of our Society, it was placed back on its original site on a new base with guardian stone posts provided by the Raritan Township Historical Committee.

Attempts to define the location for our visitor have prompted this notice. Coronet Way is located 2/3rd of a mile north of Larison's Corner and 3 2/3 of a mile south of the Flemington circle. To find this marker, turn east off Route 31/202 by the traffic light onto Coronet Way. Make the first left onto Geary Ridge Road and follow around. Between #17 and #21 on the Road, there is a narrow lot with wooden steps leading up to a path which will wind around several hundred yards to the grave site. It is a pleasant, easy walk.

2007 Calendar

- 15 April** The 1776 Flemington Raid
Charles Riddle, speaker
Flemington Public Library building
Sunday afternoon 2 p.m.
- 2 May** Volunteer Recognition Luncheon

DIEPEL/TEEPLE/TIPPEL/TIPPLE: Trying to locate anc/o
Lydia Tipple/Teeple/Tippel/Diepel, who m. Bernardus La-
grange Tunison 24 Jan 1790 at Zion Lutheran Church in
(Continued on Page 1002)

Archives Storage Building

by John W. Kuhl

At long last, after an eight-year effort to expand our storage capacity, we appear to be on the threshold of the final step. Those who have followed this saga in our newsletter and elsewhere, know that several possibilities presented themselves but were rejected for varying reasons. It has been a long process for the board of trustees. We finally have the land deeded to us by the Borough of Flemington on River Road in Raritan Township. We have gotten through the engineering and architectural phase, and with special thanks to our trustee, Don Scholl, have received planning approval. Only the matter of our required and possibly sizeable COAH assessment is still up in the air, and that is pending Raritan Township's adoption of an overall decision on its township-wide policy on this matter.

Anyone who has visited our Doric House knows how critical is our need for more storage space. Incoming archival material continues to arrive in record amounts and we are bursting at the seams. There is no longer room to store all our archives material in the proper fire-proof and climate-controlled space necessary for its long-term well being. And, there is hardly any working space left in the Doric House for our employees and volunteers. We will build a 40' by 60' two-story all-masonry building with an attached wing to house working space and room for utilities. It will resemble a barn with an exterior appropriate to the area. Stored here will be those archive materials and publications that are less frequently used, as well as our extensive newspaper collection, much of which we have on microfilm. This building is designed to be used for storage and material processing only and will not normally be open to the public. In order to make the most efficient use of this building, we plan rolling shelving that compress, into a minimum of space when not being used. This will be expensive but should double the normal storage capacity and will extend the building's usefulness to us for years. Much less costly to do this now as the wet cement is poured for the flooring, it will be a practical investment for the future.

Architect Tylman Moon has prepared the specifications and we will soon put the building out to bids. In today's climate it is difficult to estimate our final total cost and we will not know that until the bids are returned. But it is conceivable that it will run up to \$850,000.00 by the time we add in the considerable shelving costs. To raise an amount of that nature, we must ask for the support of society members and of the community in general. Some generous donations have already been received but we have a long, long way to go. We need funds now! If your financial situation is such that a sizeable donation now would be difficult, perhaps you could consider arranging your estate so as to provide for a legacy to us in the future. It is the gifts from the estates of past donors that have even allowed us to consider undertaking such a project as this. As you know, the annual operations of our society are financed principally by the income from our investments. Any reduction of those investments by covering the cost of this building will reduce our annual earnings and curtail future operations. Your support is vital to our task of continuing our primary mission of collecting and preserving the materials of our county history. Please help your society.



The Archives building site on River Road, Raritan Township, March 2007

Form of Bequest

(This form is recommended for use in making a bequest of real property, in a Will or otherwise, naming your society as beneficiary)

ITEM: I bequeath the sum of \$_____ to the Hunterdon Historical Society, Flemington, NJ.

ITEM: I bequeath to the Hunterdon County Historical Society, Flemington, NJ, without restrictions title to and full possession of historical materials and objects, (real estate, account books, diaries, Family Bibles, documents, papers, photographs, programs, newspapers, clippings, books, records), etc.

Signature: _____

Date: _____

Witness: _____

Acquisitions

Artifacts, manuscripts, family Bibles, and other material representative of the history of Hunterdon County and the families who resided here are welcome additions to the Historical Society's collections. To the donors of recent acquisitions the Society expresses its appreciation.

Red and white woven coverlet, 72" x 72", maker not identified, from the Rodenbaugh family. Donor is the great, grandson of James H. Rodenbaugh [1843-1923], grandson of Sally [Rodenbaugh] Berry [1867-1932], wife of Johnson Berry. Donors Mr. and Mrs. Charles Burkman, Pennington, NJ

Civil War discharge of Hiram Snook, dated 24 June 1863, giving his physical description and age. He was born in Hunterdon County, age 44, and was 5 feet, 9 1/2 inches high, with dark complexion, blue eyes and gray hair and by occupation was a shoe maker. Donated by Mrs. Mary Strouse, Blairstown, NJ.

Hand-crafted wooden embroidery frame, 31" adjustable, made by donor's brother. Donated by Johanna Nemeth, Southampton, PA.

Three photograph albums of Risler and associated families. Donated by James Crowder, New Egypt, NJ

"A Draught of the Union Tract late the property of Wm Allen & Joseph Turner of Philadelphia and now Divided among their Heirs A. D. 1801 & 1802" by David Frazer, Esq.; several photographs of the mills in Clinton. Donated by Frank Jones, Dover, DE.

Unraveling The Mystery Of Multiple Daniel Peggs In Hunterdon County New Jersey, compiled by Daniel K. Dixon, Sheri Pegg & Lois George Smith, written in 2006 by Daniel K. Dixon. Donated by the author, Ontario, Canada.

Sheets family memorabilia: an oil lamp carried from New Jersey to Iowa in 1884; Ella Dilts Sheets' drinking glass, 1873; Mary Emmans Dilts' copper lustre salt dish, before 1873; a gold watch and chain in original box, purchased from A. Parker, Flemington, circa 1866; Abigail Ann Sheets Bloom's gold watch with cord and key wind, in original box, purchased from O.W. Bixler, Easton, Pa.; Willie H Sheets' metal toys, a pick and hatcher, circa 1880; a strand of beads belonging to Mary Sheets, circa 1870; a necklace of two strands of small beads belonging to Lillie Sheets, circa 1875. Donated by Catherine Sheets, Oskaloosa, IA.

The Mayflower Quarterly, Volume 72, No. 4, December 2006. Mayflower Families Through Five generations: Family of Edward Fuller. Donated by New Jersey Society of Mayflower Descendants, Stephen H. Gibbon, Secretary, Medford Lakes, NJ.

One copy *The Scott Family of Cockermouth, England and Lambertville, New Jersey* compiled by Louise Rorer Rosett, 2006. Donated by the author, Albuquerque, NM.

Robins/Robbins of New Jersey, compiled by Sarah Robbins

Hoffman and John Wm. Taylor, Jr., dedicated to Charles Robbins Hutchinson and drawn partially from Mr. Hutchinson's research, printed at Marlton, NJ in 2006. Donated by Marshall Lake, Mays Landing, NJ.

The Choice/Choyce Compendium compiled and written by Betty Choyce Sheehan, 2006, contains incomplete genealogies and family histories of the Choice and Choyce families from around the world, including many collateral lines. Donated by the author, Lakeland, FL.

Did the British Troops Occupy Quakertown, New Jersey, During the Revolutionary War?, by Dan & Marty Campanelli, January 2007. Donated by the authors, Quakertown, NJ.

Three scrapbooks from the estate of Ruth C. Ent [1914-2006]: one pertinent to her involvement in Christian Endeavor; her graduating class of 1931 from Flemington High School, including a class picture; her sister, Elizabeth C. Ent's graduating class of 1928 from Flemington High School. Donated by her niece, Betty Jane Hunt, West Amwell Township, NJ.

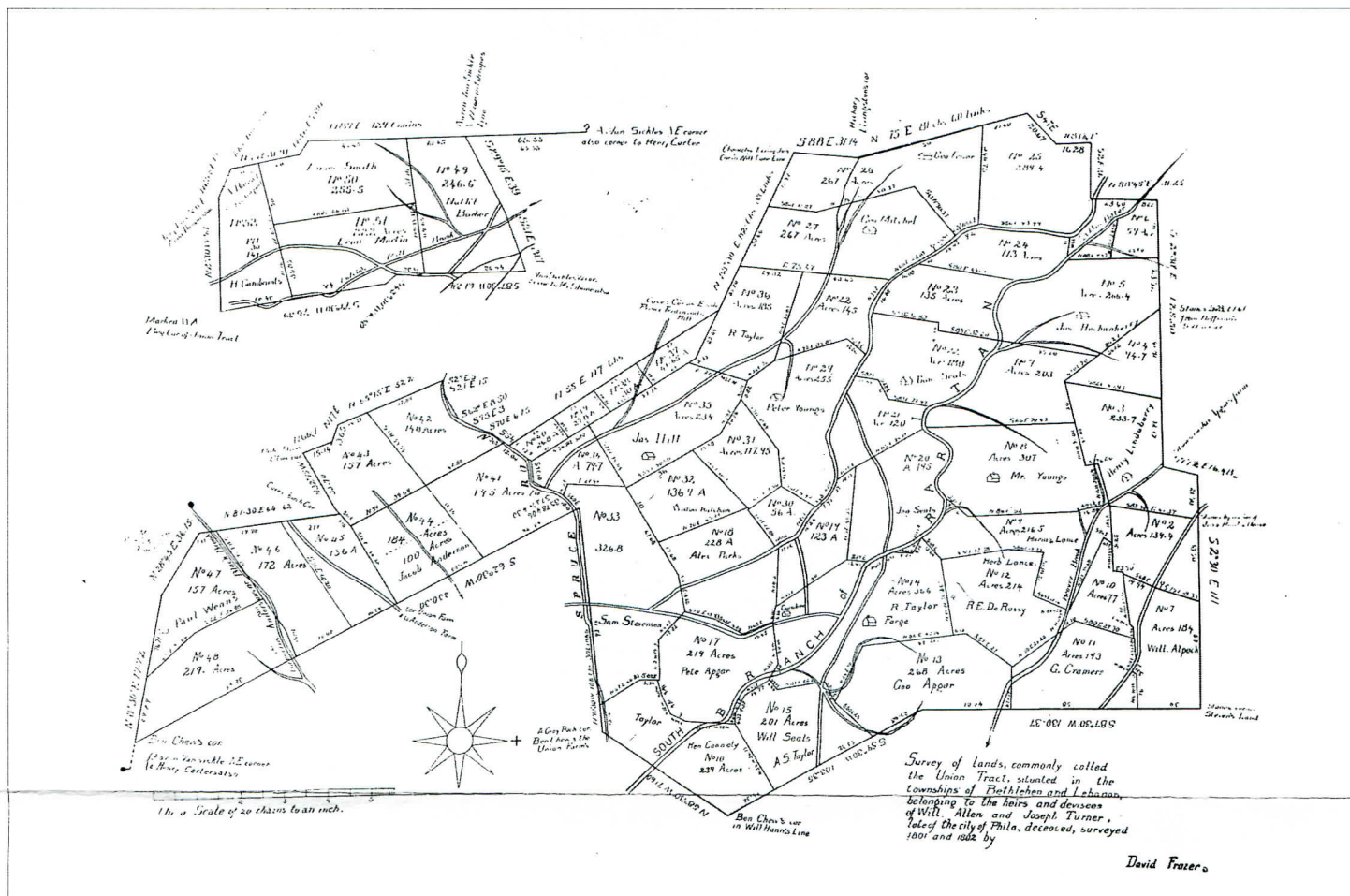
Two parchment deeds: 1) dated 1 May 1765 in which Elizabeth Kitchen, Amwell Township, executrix of late James Kitchen, to Joseph Sergeant, transferring land in Amwell Township; 2) dated 6 March 1769, in which Joseph Sergeant and wife Maria are transferring the same land purchased from Elizabeth Kitchen, to John Yawger. Donated by Jeanne Colalillo, Stockton, NJ.

NOTES AND QUERIES (Continued from page 1000)

New Germantown, now Oldwick, Her dob or baptism 1 Oct 1770 also at Zion Lutheran. ADD: J. A. Tunison, 3353 St. Clair Shores Blvd., East China, MI 48054. e-mail jtunison@argus-group.com [work], tuna@firststep.net [home]

ALPAUGH, LEIGH, VAN FLEET: Need to find par/o John Leigh (1792-1869 in NJ). John m. Euphemia VanFleet 1819 in HuntCo NJ and had: Mary, Ichabod, John T., William [my line], Jane who m. Alpaugh, and Amos Hoagland Leigh. ADD: Mary Jo Willis, Box 114, Fairview, IL 61432 [e-mail: mjwillis2003@yahoo.com]

Union Tract Division and Lot Holders



Among the recent acquisitions listed elsewhere is one from Frank Jones, formerly of Clinton, now of Dover, DE. A manuscript map entitled, "A Draught of the Union Tract late the property of Wm. Allen and Joseph Turner of Philadelphia & now divided among the heirs. A. D. 1801 & 1802." The map is signed, "A rough sketch or copy of the division of the Union Tract made A. D. 1801 & 1802" and signed by the surveyor, David Frazer.

Of significant genealogical interest, the names of those Bethlehem and Lebanon Township settlers who bought lots thereon are listed below by lot number with number of acres. A few of the lot numbers have no name listed and are designated as [blank]. Comparison of the manuscript map information was made with a photograph of another published version of the map and a reproduced copy of the map to fill in missing information.

1 184, Wm Alpoock	17 219, Peter Apgar	33 326, Sam. Stevenson	48 219 [blank]
2 139, Jos. Capner	18 278, Alex. Parks	34 79 [blank]	49 246, Nath'l Barber
3 233, Henry Lindaberry	19 123 [blank]	35 234, Jas. Hill /James Illif	50 255, Amos Smith
4 16, Harm. Lance	20 195, Jno. Seals	on other map]	51 222, Leonard Martin
5 20, Jos. Hockenberry	21 120 [blank]	36 185, R. Taylor	52 171, Amos Bassett
6 59, Dan'l Potter	22 180, Geo. Seals	37 41 [blank]	"in dispute"
7 203, Mr. Young	23 135 [blank]	38 30 [blank]	53 111, H. Garrabrand
8 307, Mrs. Young	24 113 [blank]	39 27 [blank]	
9 216, Herman Landis	25 284 [blank]	40 26 [blank]	
10 237, Hen. Con[?]oly	26 267, Geo. Felver	41 195 [blank]	
11 143, G. Cramer	27 267, Geo. Mitchell	42 148 [blank]	
12 214, Herb. Lance	28 no lot numbered	43 157 [blank]	
13 268, Geo. Apgar	29 235, Peter Young	44 184 + 100, Jacob Anderson	
14 366, R. Taylor "Forge"	30 56 [blank]	45 136 [blank]	
15 201, Will. Seals	31 117 [blank]	46 172 [blank]	
16 239 [blank]	32 436, Widow Ketcham	47 157, Paul Wean	

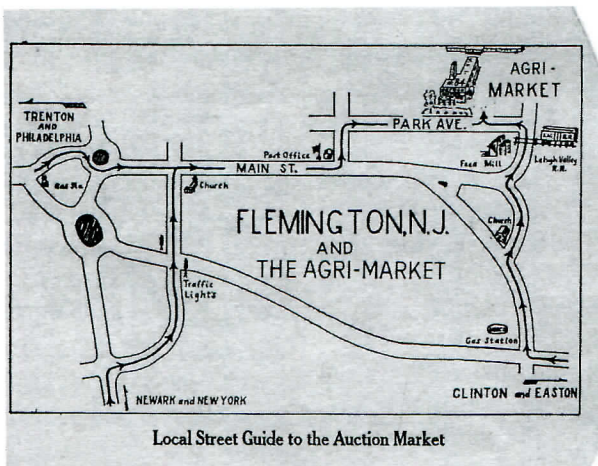


Images from the Past

FAMous Eggs — Easter 1960



William Shepherd, Photographer,
Three Bridges, NJ



The above photograph is part of the Flemington Auction Market Collection at the Hunterdon County Historical Society. Can you identify any of the FAMous eggs seen here? Lower right might be Groucho Marx.

Many "egg"amples of photographs for advertising the Flemington Egg Auction [FAM] are in this collection which came to the Historical Society when the Auction Market closed in 1976, having operated in Flemington since August 1930. *FAMous Facts About Eggs* below depicts Mr. FAMous and the location of the Flemington Auction Market.