

# HISTORIC FLEMINGTON WALKING TOUR

## highlights

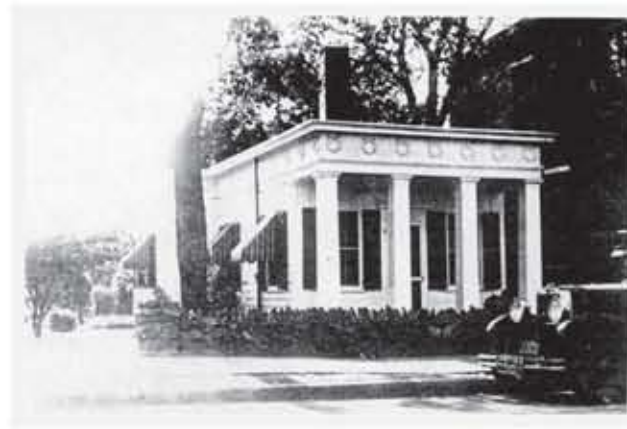


**1 Courthouse 1828**  
Built on the site of our original 1791 courthouse, the current Classical Revival structure has been renovated to appear as it did during the famous Lindbergh trial in 1935. The 1926 stone jail (behind) was used to hold accused Bruno Hauptmann during the trial.

**2 Hall of Records 1870**  
This fine Italianate structure, originally built with three separate doorways each with its own steps, was remodeled in 1928 to what you see today. Note the "common" bricks used on the sides of the building as a cost-savings technique.



**3 Horse Fountain 1902**  
The fountain was intended to provide refreshment to people from the sidewalk, horses from the street and dogs on the side.



**4 Samuel Southard Law Office 1811**  
Originally part of a larger estate that stood on this site, this simple clapboard structure was updated to its current Greek Revival style by Mahlon Fisher in 1840.



**5 Capnerhurst (parts as early as 1760)**  
Our oldest building on Main Street, this example of Colonial architecture was slated for demolition in the 1970s. The original stables have been converted to offices.



**6 Capner/Brodhead House c.1800**  
Look for this once simple Federal style brick home underneath all of the subsequent period renovations that occurred in the late 1800s.

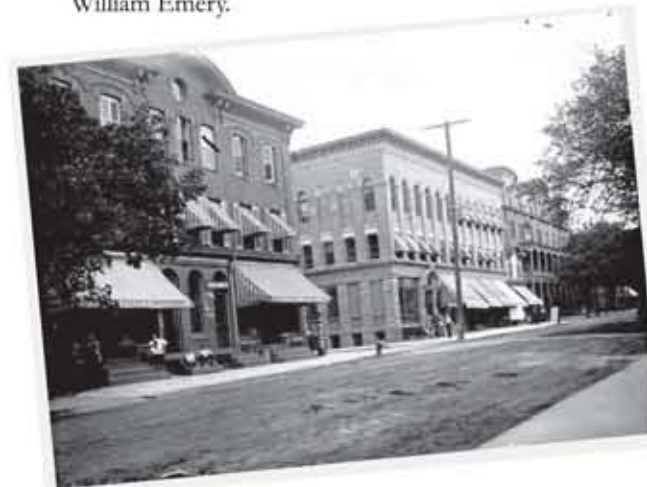
**7 Presbyterian Church 1883 (not pictured)**  
This is the third church built on this site since the congregation was founded in 1791. Note the stained glass windows, some of which are signed Louis Comfort Tiffany originals. The cemetery contains graves of Revolutionary War soldiers.



**8 War Monument erected in the late 1800s**  
Originally designed to honor Civil War veterans and those who perished, the monument was renovated in 1996 to reflect all wars to date.



**9 Roselawn c.1890**  
Only a third of the original magnificent estate pictured here has survived. Once a compilation of three homes gathered and joined on this site by wealthy retailer William Emery.

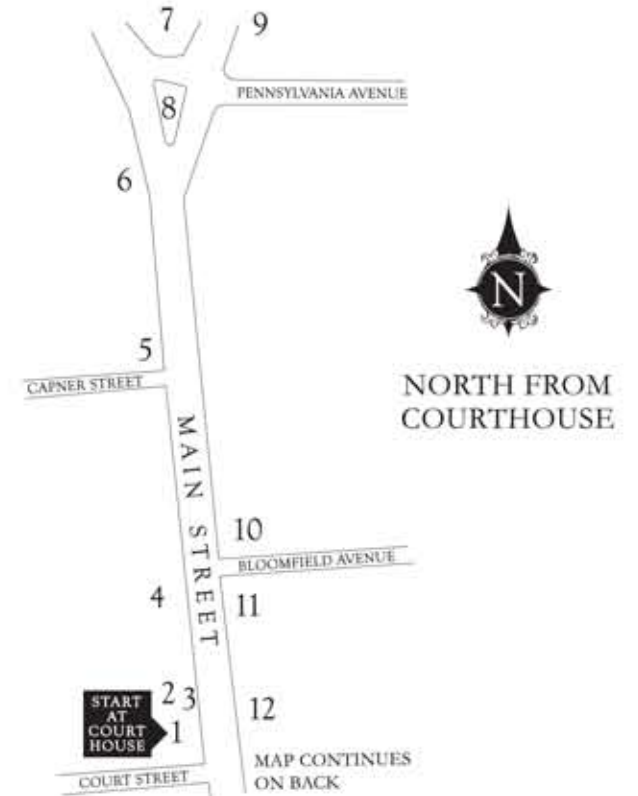


**10 Town Clock/Rea Building 1874**  
Another fine example of Italianate architecture, built by clock maker George Rea. You'll find his initials surrounding the round pediment window. Step back to see the clock tower. Note that Main Street is still a dirt road in this early 20th. century postcard.

**11 Bank Building 1897**  
This classic brick and stone building survived a first floor fire in 1901. Multiple entry-ways have been changed over the years.



**12 Union Hotel 1877**  
Built on the site of an old stage coach stop between NY and Philadelphia, it had heated rooms and indoor plumbing (quite a luxury in 1877). The hotel became famous when the Lindbergh Trial jury was sequestered here in 1935.



Sam Fleming, the town's namesake, settled here in 1756. He built his home/tavern on what is now Bonnell Street. Fleming's Castle, as it was named back when it was the largest structure amidst Native American lean-tos, still stands today, relatively unchanged.

Flemington also boasts architectural gems from every major historical period, including an impressive presentation of Greek Revival architecture thanks to prominent architect Mahlon Fisher, who resided here during the mid-1800s.